

Top Stories This Week

- ≈ Central Board of Direct Taxes (CBDT): -Notifies final General Anti Avoidance Rules (GAAR) rules - GAAR to be applicable from April 1, 2016 -GAAR not applicable to transactions where taxes benefit less than Rs 3 crore. -GAAR not applicable to specific FIIs -GAAR not applicable to income from transfer of investments before August 30, 2010, -GAAR applicable if tax benefit obtained from arrangement on/after April 1,2015.
- ≈ Tata, Sistema, Aircel in talks for merger.
- ≈ RBI: FIIs need approval to buy MCX India shares as trigger limit reached.
- ≈ Central Vigilance Commission (CVC) may close complaints of irregularities in Jet Airways - Etihad deal: PTI sources Alert: BJP MP Nishikant Dubey had alleged wrongdoings in Jet-Etihad deal - Aviation Ministry submitted replies to CVC on BJP MP's allegations.
- ≈ Reliance Power has approached the power regulator seeking an increase in tariff for electricity generated from its ultra mega power project at Talaiya in Jharkhand, citing regulatory delays, higher prices of land and a sharp increase in equipment cost due to the rupee's depreciation.

Weekly Indices Change

Index	Close	P. Close	Chg. (%)
SENSEX	19727	20263	(2.65)
NIFTY	5833	6012	(2.98)
MIDCAP	5621	5677	(0.99)
SMLCAP	5496	5485	0.20
METAL	8580	8659	(0.91)
OIL&GAS	8362	8750	(4.43)
AUTO	11161	11203	(0.37)
TECK	4458	4458	0.00
BANKEK	11284	12166	(7.25)
IT	7834	7810	0.31
FMCG	6925	7023	(1.40)
HC	9472	9327	1.55
PSU	5562	5704	(2.49)
CD	5828	5819	0.15
POWER	1546	1547	(0.06)
CG	7938	8071	(1.65)
REALTY	1195	1287	(7.15)

Global Indices

DOW	15258	15451	(1.25)
NASDAQ	3781	3774	0.19
FTSE	6512	6611	(1.50)
NIKKEI	14760	14742	0.12
HANGSENG	23207	23502	(1.26)

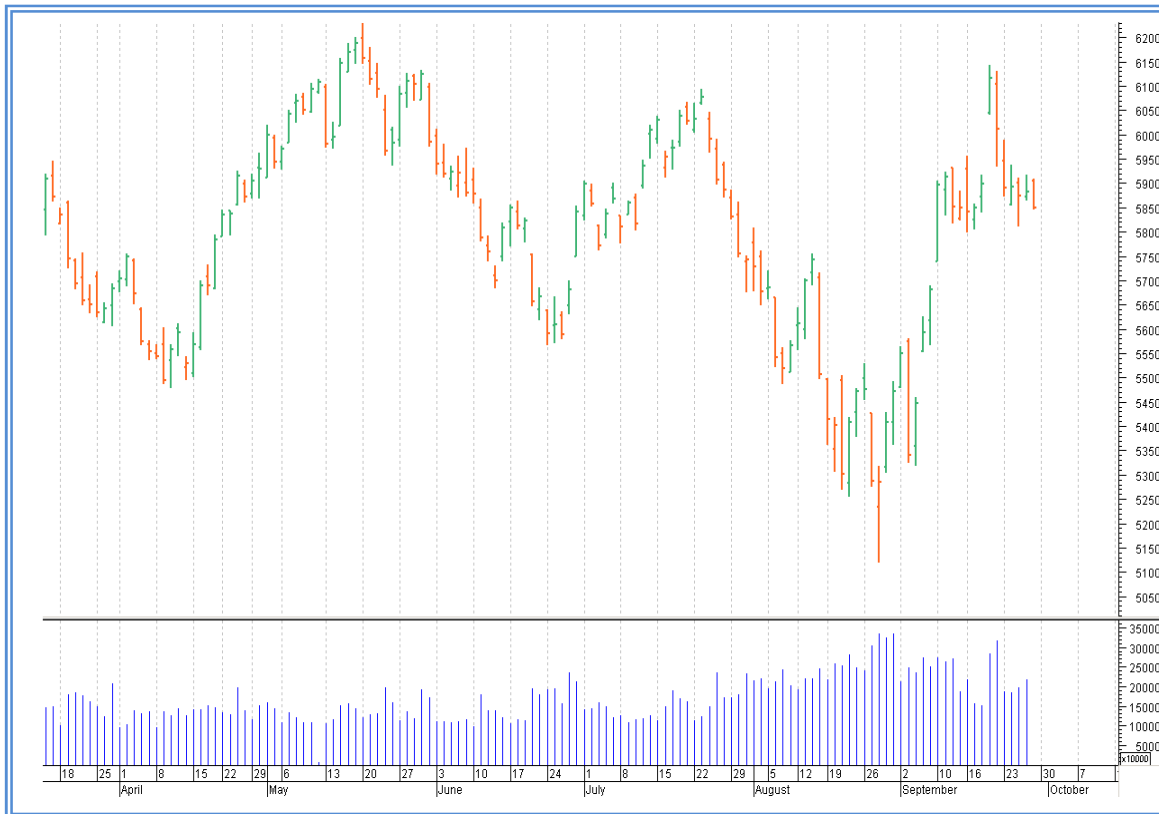
Top Gainers Weekly

Scrip	Price	% Chg
AUROPHARAM	200	13.47
PIPAPAVDOC	51	13.26
ASHOKLEY	15	12.31
JUBLFOOD	1172	12.19
GMRINFRA	22	11.70

Top Losers Weekly

Scrip	Price	% Chg
GITANJALI	54	19.48
DLF	132	17.98
CENTRALBANK	50	15.53
FINANTECH	150	15.12
ORIENTBANK	150	13.37

Nifty Corner



Support & Resistance						
S3	S2	S1	Nifty	R1	R2	R3
5600	5700	5750	5833	5950	6050	6100
Moving Averages						
20DMA		50DMA		100DMA		200DMA
5480		5705		5810		5835

Market Commentary

During the week both Nifty & Sensex closed with the loss of more than 2.5%. Bankex and Realty were the worst hit they loss more than 7% and Oil&Gas lost with more than 4%. Teck, IT and Consumer Durables only manage to close with moderate gains during the week. For the next week Nifty likely to trade in the range between 5950 - 6100 in the upper side and 5750 - 5600 in the lower side.

Stocks at 52 wk High

Scrip	Cmp
MINDTREE	1193
JUSTDIAL	847
ENIL	288
DENSO	132
SUNPHARMA	590

Stocks at 52 wk Low

Scrip	Cmp
GODREJPROP	346
PARSVNATH	26
ERAINFRA	115
--	--
--	--

FII Activity

Date	Figures in crore
23/09	-80.57
24/09	-21.09
25/09	382.45
26/09	172.15
27/09	-244.95
NET	207.99

DII Activity

Date	Figures in crore
23/09	-745.88
24/09	-493.74
25/09	-473.28
26/09	-362.11
27/09	-115.27
NET	-2190.28

Weekly Stock Idea

Scrip	B/S	Cmp	Tgt
SBIN (FUT)	S	1640	1570
ADANIENT	B	145	160
POLARIS	B	126	135
EICHERMOTORS	B	3554	3650
BATAINDIA	B	850	875

Buy on dips & Sell on rise with Stop-loss of 3%

Volume Breakout Stocks

Scrip	Cmp
TTML	7
VIDEOIND	180
GESHIP	288
PVR	468
SCI	38

Week Ahead**RESULTS THIS WEEK:**

30 SEPT: FACT.

01 OCT: VISASTEEL.

03 OCT: GMBREW.

[VISIT US AT: WWW.INDIRATRADE.COM](http://WWW.INDIRATRADE.COM)

Disclaimer

This report is for private circulation within the Indira Group. This report is strictly confidential and for information of the selected recipient only and may not be altered in any way, transmitted to, copied or distributed, in part or in whole, to any other person or to the media or reproduced in any form. This report should not be construed as an offer or solicitation to buy or sell any securities or any interest in securities. It does not constitute a personal recommendation or take into account the particular investment objectives, financial situations, or any such factor. The information, opinions estimates and forecasts contained here have been obtained from, or are based upon, sources we believe to be reliable, but no representation of warranty, express or implied, is made by us to their accuracy or completeness. Opinions expressed are our current opinions as of the date appearing on this material only and are subject to change without notice.